

E.S.T. Cologne



HISTORY

Auferstehungskirche was constructed in 1907 according to the Cologne architectural style of the large sacral buildings. Following its construction the imposing building graced the heart of Cologne's city centre for 37 years. In 1944 it was fully destroyed during the Second World War except for its main tower. About 47 years later Auferstehungskirche was rebuilt as an innovative office building based on its previous charm. Special emphasize was placed on retaining the original shape, which is visible in the red steel beams that simulate the former silhouette.





ECONOMIC METROPOLIS COLOGNE

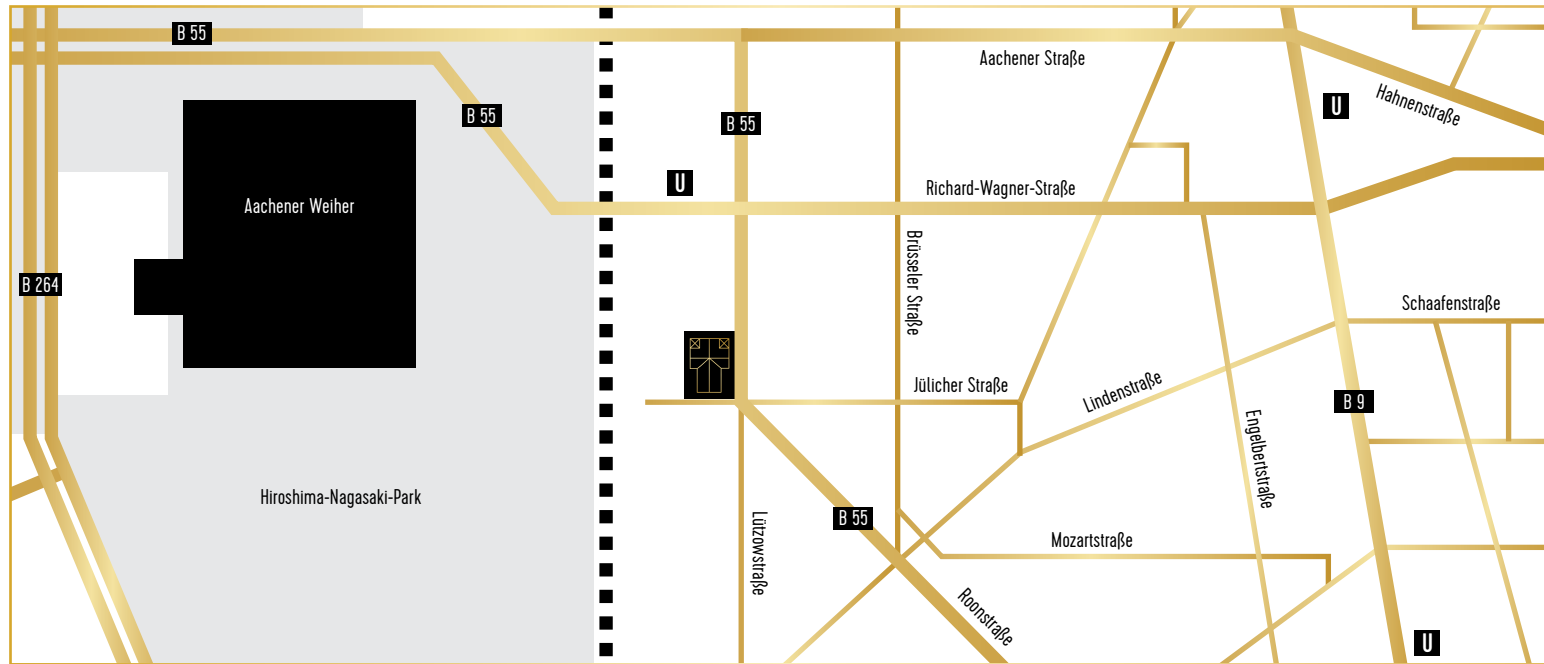
With over one million inhabitants Cologne has the fourth highest population in Germany and the biggest population in North-Rhine-Westphalia and is forecasted to grow further in the years to come. Situated far in the west, Cologne developed into one of the most vibrant economic and cultural locations in Germany. Its importance as an infrastructure hub is highlighted through its large inland port, a large amount of railway traffic, numerous motorway connections in all directions and the important airport Cologne/Bonn. As a result of these favorable conditions a large number of associations, media and industrial companies have their headquarters in Cologne. Culturally diverse, Cologne impresses with a friendly and cosmopolitan atmosphere.



GERMANY'S 4TH BIGGEST CITY

Cologne has over a million citizens, which makes it Germany's fourth biggest city by population. Additionally its area of 405,01 km² makes it one of the Top 10 largest German cities by size. Cologne's continuous efforts to further improve its existing infrastructure including train connections, roads and motorway connections as well as the bicycle tracks around the city, are designed to meet the needs of the strong population growth that is forecasted until 2030 and make it even more attractive for companies. More companies opening offices together with more people moving to Cologne, will drive real estate prices in general. In light of the already existing shortage of quality office space, altogether this will lead to a rise in the prices for office space and therefore increase the value of office buildings around the city.





CENTRAL MICRO-LOCATION

T

he micro-location of Auferstehungskirche has numerous advantages: there are plenty of restaurants as well as shopping and cultural possibilities in the close neighborhood. Nearby parks Aachener Weiher and Hiroshima-Nakasaki Park offer a chance to relax. Additionally the proximity to the metro and to Aachener Straße, which is one of Cologne's main roads, result in the micro-location being popular for residential and commercial purposes. Cologne/Bonn airport can be reached in 20 minutes by car.





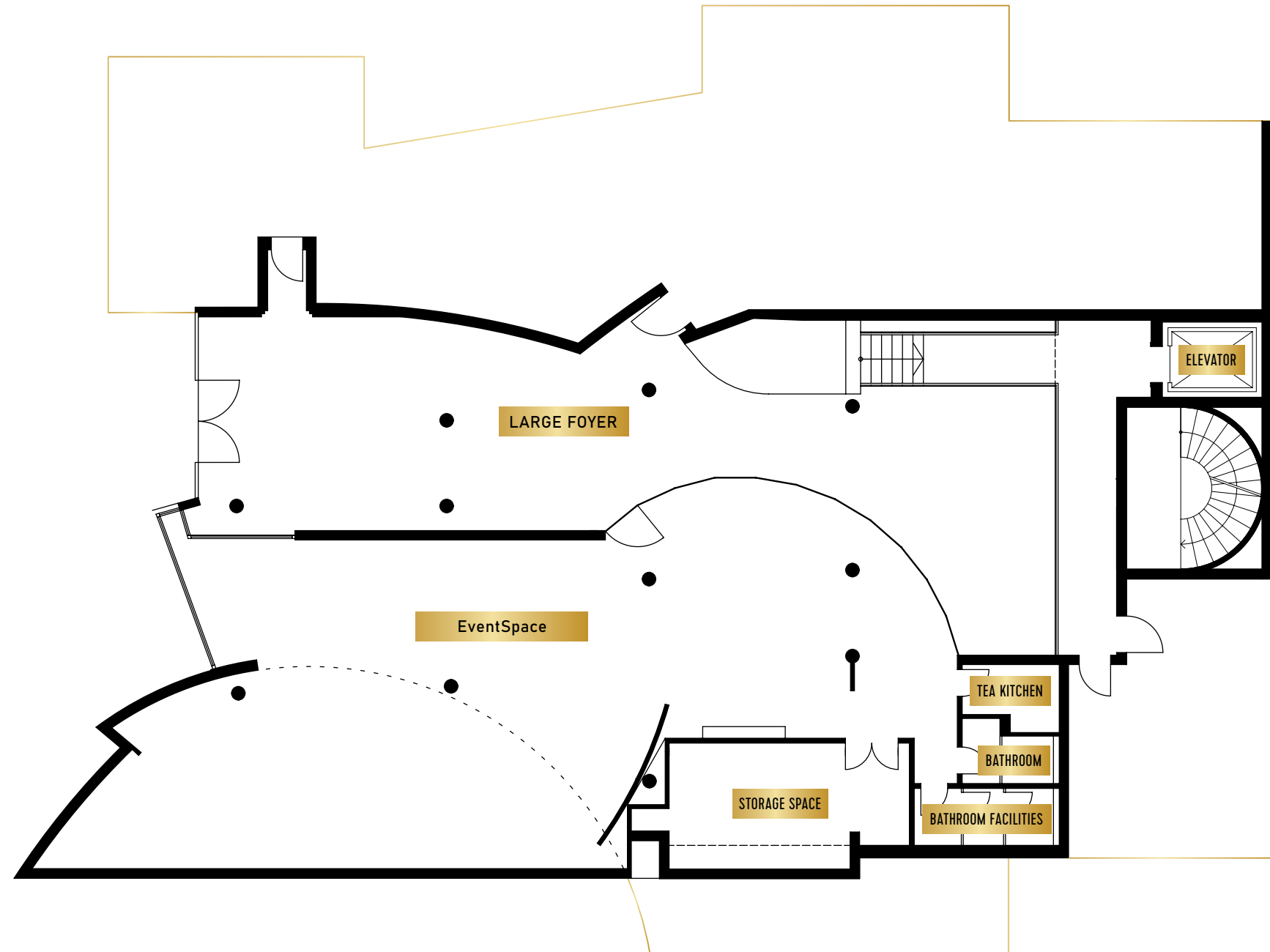
MEDIA CAPITAL COLOGNE

Cologne is a dynamic, creative and metropolitan city situated at the Rhine river. Among many others, especially companies from the media industry value the great flair and networking possibilities. More than 55.000 people work in media companies such as Media Group RTL or Microsoft in Cologne. Many reknown agencies have been opening offices in Cologne recently bringing extra people, business and potential customers to the city. Cologne has an outstanding national and international reputation and additionally is one of Germany's major trade fair locations.

EG

KEY FACTS GROUND FLOOR

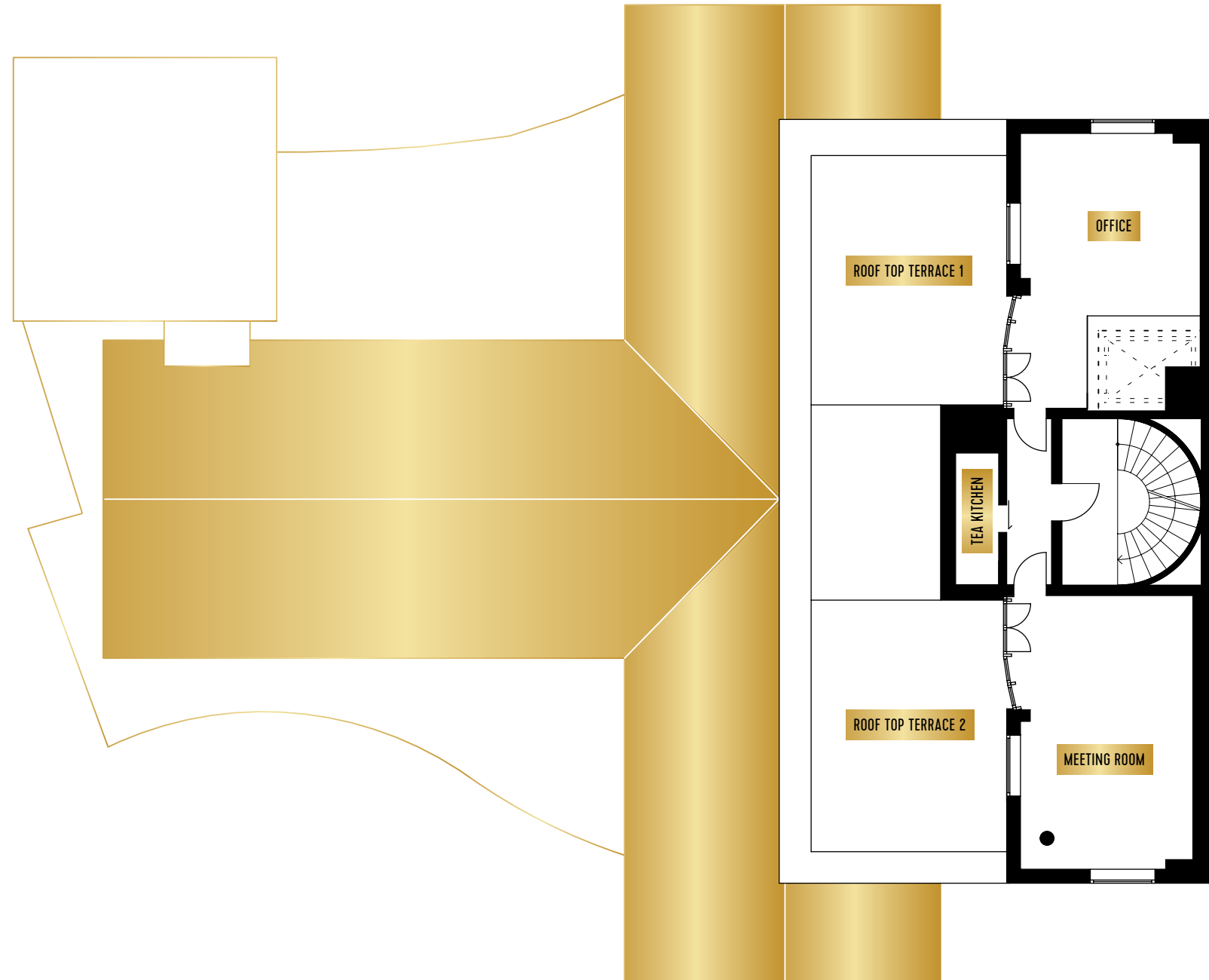
- Spacious Foyer of ca. 140 m²
- EventSpace of ca. 200 m²
- Ca. 20 m² storage space
- Tea kitchen of ca. 4 m²
- Bathroom facilities of 6 m² and 3 m²
- Elevator



6.

KEY FACTS 6TH FLOOR

- 1 office
- 1 meeting room
- Tea kitchen of ca. 4 m²
- 60 m² roof top terrace overlooking Cologne













FACTS & FIGURES

- Area (m²):
- Ground Floor 200 + 140 m²
- 6th Floor 40 + 60 m²
- 51 underground parking spots

